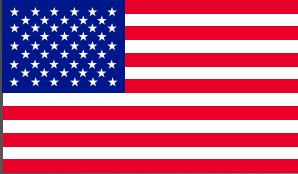


NTM Inc.

ONE STOP TOOLING AND MACHINE SHOP

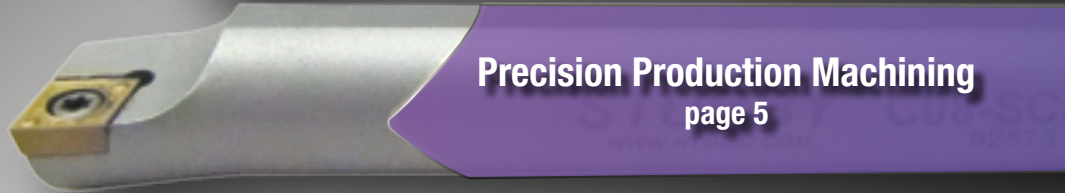
2024 Product & Services Catalog



Made in the USA



Magnetic V-Blocks
page 4



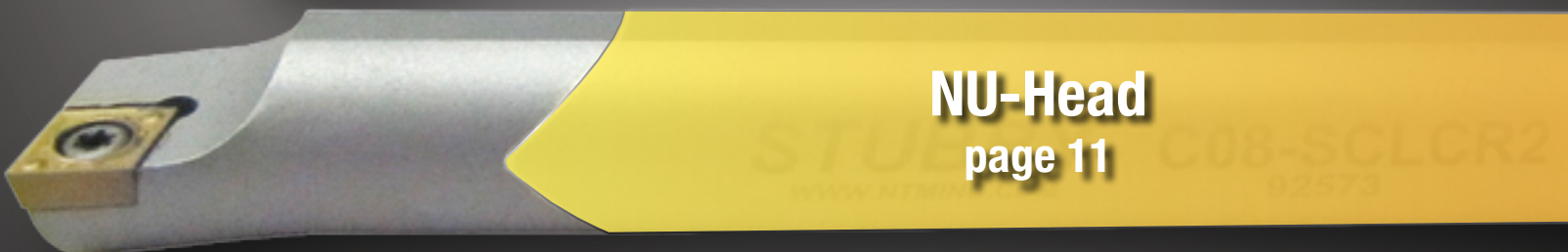
Precision Production Machining
page 5



Custom Tool Grinding & Sharpening
page 6



STUBBY Indexable Tools
page 8



NU-Head
page 11

NTM, Inc.
151 Longfellow Street N.E.
Minneapolis, MN 55432
Phone: 763-780-1420 | 800-274-4686
Email: sales@ntminc.com
www.ntminc.com



Products & Services

NTM Contacts

Main Number (763) 780-1420

John Ashe johna@ntminc.com # 210
Custom Tool Grinding, Sharpening,
and Grinding Production

Lisa Stumpf lisas@ntminc.com # 212
Accounts Receivable, V-Blocks, Customer Service

Todd Robyn toddr@ntminc.com # 205
Stubby Bars, NU-Head Department,
Tool Design and Quoting

Keith Pickett keithp@ntminc.com # 204
NTM General Manager

Byron Grinager byrong@ntminc.com # 213
Shipping Department

Eddie Engesether eddiee@ntminc.com # 209
Quality Department

Vickie Parks vickiep@ntminc.com # 202
Business Development

Magnetic V-Blocks	page - 4
Custom Tool Grinding	page - 6
Sharpening Capabilities	page - 7
Stubby® Advantage	page - 8
Stubby® Boring Bars Best Sellers	page - 9
NU-Heads	page - 11
Boring Bar Identification	page - 12

Boring Bars

Carbide	MCLN-MWLN-MTLN	page - 13
	SCLP-SCLC	page - 14
	SDUP-SDUC	page - 15
	STFC-STFP	page - 16
	SWLP-SWLO	page - 17
	SWLC-STJO	page - 18
	STUP-STUC	page - 19
	STUN-CTFP	page - 20
	NELL-NKLC	page - 21
	LSER-NER	page - 22

RETURN POLICY

NTM Inc. will accept any catalog item for return in new unused condition within 30 days of shipment for account credit. After 30 days, a 20% restocking fee will apply. No returns will be accepted on catalog items after 90 days. **NTM Inc.** will not accept returns on non-catalog or special tooling.

NTM Inc. guarantees braze on all Stubby® Boring Bars and will replace or re-head any returned Boring Bars inspected by NTM and deemed a manufacturer defect. Credits will not be issued.

NTM Inc. guarantees all special tooling will be made according to customer specs. Please notify us within 30 days of receipt if any issues arise and we will remake tools to align with customer-approved print. Credits will not be issued for special tooling.

****Modification of any NTM Inc. product or special voids guarantee.**

ULTRA PRECISION MAGNETIC V-BLOCKS



Part Number	Holding Capacity
41101-90	.030" Ø - .625" Ø
41102-90	.062" Ø - 1.250" Ø

- Case hardened
- All surfaces ground parallel and perpendicular to one another within .0002" total tolerance
- Most accurate way to check small parts, frequently used in the medical industry
- Matched Sets are available upon request

IN STOCK

Order online at
ntminc.com

PRODUCTION MACHINING CAPABILITIES STATEMENT

“NTM was started by my dad, Bob Thielen in 1976 to not only start his own business, but to become a niche machining company that supported national defense programs. He worked in the shop every day and grew the company to be a well-respected shop, now with our own product line of cutting tools. As a certified woman owned business, my goal continues to be the same. We continue to support DoD, holding an excellent supplier rating from our customers.”

~ Barb Dorumsgaard, President

PRECISION MACHINING CORE COMPETENCIES

• Production CNC Milling

- Up to 60” of “X” travel (left to right)
- Up to 29” of “Y” travel (front to back)
- Up to 25” of “Z” travel (up and down)

• Production CNC Turning

- Live tooling lathe capability with sub spindle and bar feeder
 - ◆ Size of chuck (main spindle) 8”
 - ◆ Size of chuck (sub spindle) 6.5”
 - ◆ Max Bar stock dia. 2.6”
 - ◆ Max Bar length 36”
 - ◆ Max Turn length 20.47”

EQUIPMENT LIST – 25,000 Square Feet of Production Area

- CNC Mitsubishi Machining Center
- YCM NXV1680B High Performance Vertical Machining Center
- OKK VM7III
- Daewoo DMV-500
- Doosan Puma 2100SY -
Live Tooling Lathe sub spindle w/bar feeder
- Hyundai WIA SE 2200L Lathe
- DNM 6700 Vertical Maching Center
- (2) HAAS VF-1 Mills
- HAAS VF-2

**NTM line of OEM Stubby® Indexable cutting tools
can be found on our website
<https://www.ntm-inc.com>**

OUR QUALITY POLICY

NTM is committed to comply with customer requirements and to provide on-time quality products through continuous improvement of our processes.

Cage Code: 3W356

DUNS #071783401

NAICS Codes:

332710 Machine Shops

332721 Precision Turned Product

333515 Cutting Tool & Machine Tool Mfg.

CERTIFICATIONS

ISO 9001:2015

WOSB Cert. # WOSB181051

WBENC Cert. # WBE1801244

PAST PERFORMANCE:

- Vendor for defense for 40 years
- BAE Gold Star Rating 2020
- BAE Gold Supplier of the Year Award 2021 & 2022
 - ◆ Outstanding Quality
 - ◆ Outstanding On-Time Delivery



Made in USA



We specialize in tooling up to 10" overall length, Ø.125 to 2.00 in diameter. For larger sizes, contact us at sales@ntminc.com. High Volume Loader work up to 5" OAL, Ø.750 and under.

CORE COMPETENCIES:

- Versatility and Innovation
- If you can dream up a tool we can make it!
 - Solid Carbide
 - Coolant Thru Carbide
 - Carbide Tipped
 - HSS
 - Special Coatings Available
- High Volume Lights out Manufacturing

GRINDING EQUIPMENT LIST:

- (4) Walter Power 500 5 axis tool and cutter grinders
 - (3) with loaders
- (1) Helicheck PRO
- (1) ANCA RGX 5 axis grinder
- (1) TruTech Revolution CNC Centerless Grinder
- (1) TruTech T23X CNC OD Grinder 10" X 20" length
- (3) Okamoto 12"X24" Surface Grinders
- (6) Cincinnati Monoset Tool and Cutter Grinders
- (2) Cincinnati #2 Universal Grinders
- (2) Makino Universal Grinders
- (1) Hybco Cam Relief Grinder
- (2) Sheffield Microform Grinders

OUR QUALITY POLICY

NTM is committed to comply with customer requirements and to provide on-time quality products through continuous improvement of our processes.

Contact
sales@ntminc.com
763-780-1420
www.ntminc.com



DUNS #071783401

NAICS Codes:

332710 Machine Shops
332721 Precision Turned Product
333515 Cutting Tool & Machine Tool Mfg.

ITAR Registrant

CERTIFICATIONS

ISO 9001:2015

WOSB Cert. # WOSB181051

WBENC Cert. # WBE1801244

PAST PERFORMANCE:

- Vendor for Lake City Army Ammunition Plant over 30 years providing cutters and bunters
- Tooling Supplier for OEM's for over 40 years
- Outstanding Quality



Made in USA



TOOL SHARPENING CAPABILITIES

Extend the life of your tooling investment with our regrinding and sharpening service. Many special coatings are available, just ask!

- Carbide and HSS End Mills
- Rougher End Mills
- Carbide, HSS and Powdered Metal Drills
- Countersinks
- Threadmills
- Engraving Tools
- Dead Centers
- Reamers
- Center Drills
- Keyway / Woodruff Cutters
- Spot Drills
- Corner Rounds
- Counterbores / Spotfacers
- Spade Drill Inserts
- Slitting Saws
- Shapers
- Milling Cutters

*Let us know if you need an
NTM reusable tote
to transport your tools.*



***Re-Sharpener Tool Disclaimer:** Upon occasion while re-sharpening used tooling, damage may occur beyond repair, in which case NTM will credit up to 30% of the replacement cost of the damaged tool. Contact sales@ntminc.com or call 763-780-1420

THE **STUBBY**® ADVANTAGE

Stubby® Boring Bars:

- Patented Chisel Cut: "V" adaptation for steel head to carbide shank fit
- "V" allows more surface to braze joint
- The flat surface of the "V" allows gases of the brazing application to escape making the steel to carbide braze a stronger bond
- Offered in solid and coolant through
- Over 150 styles and sizes of heads available
- ***Our Top Selling Bars are now online and in stock!***
- Shorter Shanks
- Shorter Flute Lengths
- Greater Rigidity
- Longer Insert Life
- Higher Production Rates



***Guaranteed
Patented Braze***

STUBBY® Carbide Boring Bars

Stubby® Top Sellers are In Stock!

The 15 Boring Bars listed on this page and the next are the only bars you can order through the website “ecommerce” function.

All other bars can be ordered by emailing sales@ntminc.com or calling 763-780-1420.



3/4 Ø STUBBY®
Carbide Boring Bar With Coolant
E12-SCLCR-3



5/8 Ø STUBBY®
Carbide Boring Bar With Coolant
E10-SCLCR-3



1/2 Ø STUBBY®
Carbide Boring Bar With Coolant
E08-STUCR-2



1/2 Ø STUBBY®
Carbide Boring Bar With Coolant
E08-SCLPR-2



1/2 Ø STUBBY®
Carbide Boring Bar With Coolant
E08-SCLCR-3



1/2 Ø STUBBY®
Carbide Boring Bar With Coolant
E08-SCLCR-2

ORDER ONLINE TODAY! at ntminc.com

Active Distributors: Please call or email for your code
sales@ntminc.com | 763-780-1420



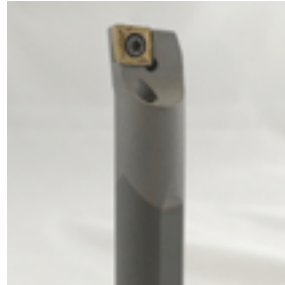
Made in USA



STUBBY® Carbide Boring Bars



3/8 Ø STUBBY®
Carbide Boring Bar With Coolant
E06-SCLPR-2



3/8 Ø STUBBY®
Carbide Boring Bar With Coolant
E06-SCLCR-2



5/16 Ø STUBBY®
Carbide Boring Bar With Coolant
E05-SCLCR-2



5/8 Ø STUBBY®
Carbide Boring Bar
C12-SCLCR-3



5/8 Ø STUBBY®
Carbide Boring Bar
C10-SCLCR-3



1/2 Ø STUBBY®
Carbide Boring Bar
C08-SCLCR-3



1/2 Ø STUBBY®
Carbide Boring Bar
C08-SCLCR-2



3/8 Ø STUBBY®
Carbide Boring Bar
C06-SCLCR-2



5/16 Ø STUBBY®
Carbide Boring Bar
C05-SCLCR-2

ORDER ONLINE TODAY! at ntminc.com

NU-Head™

Replacement Head System for Carbide Shank Boring Bars

- Damaged Carbide Indexable Boring Bars
Repaired for Half the Price of New in one week!
- 5/16" and up
- 150 Different Sizes and Styles of Heads in Stock
for you to choose from



Bar Type
C Solid Carbide Bar
D Heavy Metal Bar
E Carbide Bar w / Coolant

Bar Ø & Length		
03	3/16" Ø	4.50 OAL
04	1/4" Ø	4.50 OAL
05	5/16" Ø	4.50 OAL
06	3/8" Ø	4.75 OAL
08	1/2" Ø	5.00 OAL
10	5/8" Ø	7.00 OAL
12	3/4" Ø	7.00 OAL
16	1.0" Ø	7.00 OAL

Lead Angle
F 0°
L -5°
U -3°
J -2°

C 1 2 - S C L C R 3

Insert Clamping
M MultiClamp
N TopNotchClamp
S ScrewDown
C TopClamp

Insert
C 80° Diamond
D 55° Diamond
T 60° Triangle
V 35° Diamond
W 80° Trigon

Insert Clearance Angle
C 7°
N 0°
P 11°
O Specific Description

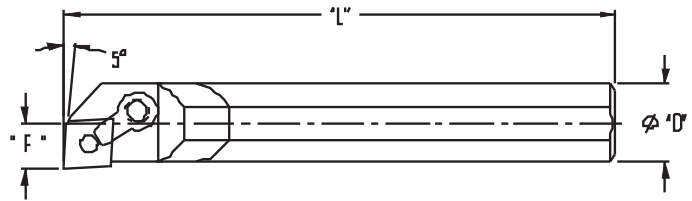
Bar Cut
L Left Hand
R Right Hand

Insert Size
1.5 .187 IC
1.8 .218 IC
2 .250
3 .375 IC
4 .500 IC



Carbide Boring Bars

MCLN
 *Boring & Facing
 *Uses CNMG insert

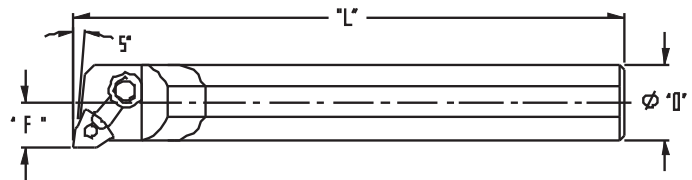


carbide shank

Catalog Number	Shank Dia.	L	F	Min. Bore	Clamp/Screw	Cam Screw	Insert
C16-MCLNR/L-4	1	7"	0.625	1.135	CK-20/STC-11	NL-44	CNMG-432

↑ "R" for right hand bar
 ↑ "L" for left hand bar
 ↑ "C" for solid shank
 ↑ "E" for coolant thru

MWLN
 *Boring & Facing
 *Uses WNMG insert

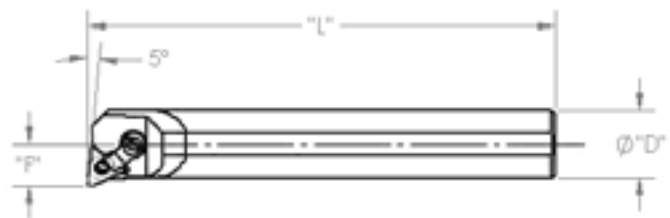


carbide shank

Catalog Number	Shank Dia.	L	F	Min. Bore	Clamp/Screw	Cam Screw	Insert
C10-MWLN-3	0.625	7"	0.44	0.76	CK-5/STC-5	NL-33	WNMG-322
C12-MWLN/L-3	0.75	7"	0.50	0.885	CK-6/STC-5	NL-33	WNMG-322
C12-MWLN-33	0.75	7"	0.50	0.885	CK-7/STC-9	NL-33L	WNMG-332
C16-MWLN/L-3	1	7"	0.625	1.135	CK-6/STC-5	NL-33	WNMG-322
C16-MWLN-4	1	7"	0.625	1.135	CK-20/STC-11	NL-44	WNMG-432

↑ "R" for right hand bar
 ↑ "L" for left hand bar
 ↑ "C" for solid shank
 ↑ "E" for coolant thru

MTLN
 *Boring & Facing
 *Uses TNGA insert



carbide shank

Catalog Number	Shank Dia.	L	F	Min. Bore	Clamp/Screw	Cam Screw	Insert
C16-MTLNR-3	1	7"	0.625	1.135	CK-7/STC-9	NL-33L	TNGA-332

↑ "R" for right hand bar
 ↑ "L" for left hand bar
 ↑ "C" for solid shank
 ↑ "E" for coolant thru

Heavy metal shanks available, please call for quote
 1-800-274-4686



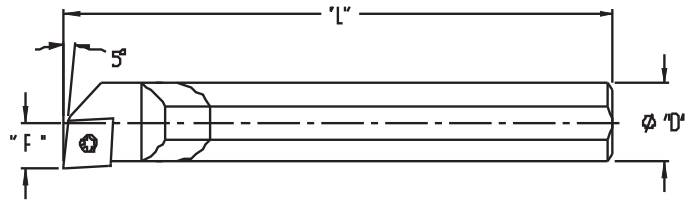
Made in USA





Carbide Boring Bars

SCLP
 *Boring & Facing
 *Uses CPMT insert

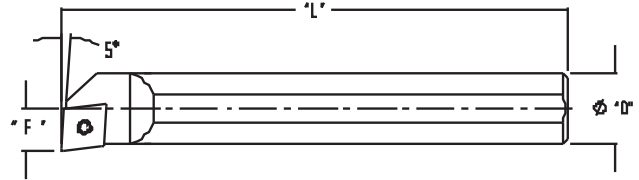


carbide shank

Catalog Number	Shank Dia.	L	F	Min. Bore	Insert Screw	Insert
C05-SCLPR/L-1.8	0.312	4-1/2"	0.219	0.385	MS-1152	CPMT-1.81.51
C05-SCLPR/L-2	0.312	4-1/2"	0.219	0.385	MS-1153	CPMT-21.51
C06-SCLPR/L-2	0.375	4-3/4"	0.25	0.447	MS-1153	CPMT-21.51
C08-SCLPR/L-2	0.5	5"	0.312	0.572	MS-1153	CPMT-21.51
C08-SCLPR/L-3	0.5	5"	0.312	0.572	MS-1155	CPMT-32.52
C10-SCLPR/L-2	0.625	7"	0.406	0.728	MS-1153	CPMT-21.51
C10-SCLPR/L-3	0.625	7"	0.406	0.728	MS-1155	CPMT-32.52
C12-SCLPR/L-3	0.75	7"	0.5	0.885	MS-1155	CPMT-32.52
C16-SCLPR/L-3	1	7"	0.625	1.135	MS-1155	CPMT-32.52

↑ "C" for solid shank
 ↑ "E" for coolant thru
 "R" for right hand bar
 "L" for left hand bar

SCLC
 *Boring & Facing
 *Uses CCMT insert



carbide shank

Catalog Number	Shank Dia.	L	F	Min. Bore	Insert Screw	Insert
C05-SCLCR/L-2	0.312	4-1/2"	0.219	0.385	5513-020-03	CCMT-21.51
C06-SCLCR/L-2	0.375	4-3/4"	0.25	0.447	5513-020-03	CCMT-21.51
C08-SCLCR/L-2	0.5	5"	0.312	0.572	5513-020-03	CCMT-21.51
C08-SCLCR/L-3	0.5	5"	0.312	0.572	5513-020-09	CCMT-32.52
C10-SCLCR/L-2	0.625	7"	0.406	0.728	5513-020-03	CCMT-21.51
C10-SCLCR/L-3	0.625	7"	0.406	0.728	5513-020-09	CCMT-32.52
C12-SCLCR/L-3	0.75	7"	0.5	0.885	5513-020-09	CCMT-32.52
C16-SCLCR/L-3	1	7"	0.625	1.135	5513-020-09	CCMT-32.52
C16-SCLCR/L-4	1	7"	0.641	1.15	5513-020-17	CCMT-432

↑ "C" for solid shank
 ↑ "E" for coolant thru
 "R" for right hand bar
 "L" for left hand bar
 Heavy metal shanks available, please call for quote
 1-800-274-4686



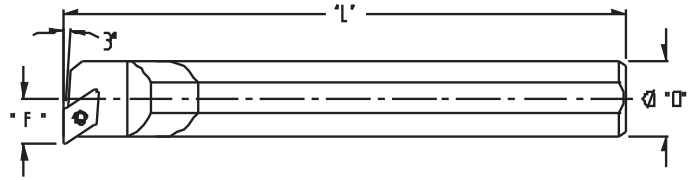
Made in USA





Carbide Boring Bars

SDUP
 *Boring & Facing
 *Uses DPMT insert

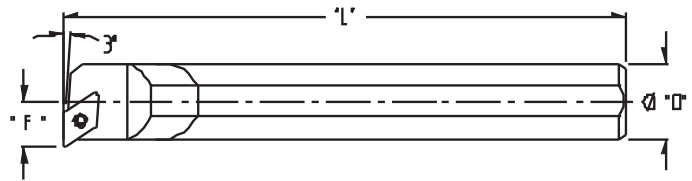


carbide shank

Catalog Number	Shank Dia.	L	F	Min. Bore	Insert Screw	Insert
C06-SDUPR/L-2	0.375	4-3/4"	0.375	0.572	MS-1153	DPMT-21.51
C08-SDUPR/L-2	0.5	5"	0.437	0.697	MS-1153	DPMT-21.51
C10-SDUPR/L-2	0.625	7"	0.5	0.822	MS-1153	DPMT-21.51
C12-SDUPR/L-3	0.75	7"	0.562	0.947	MS-1155	DPMT-32.52

↑
 ↑
 "R" for right hand bar
 "L" for left hand bar
 "C" for solid shank
 "E" for coolant thru

SDUC
 *Boring & Facing
 *Uses DCMT insert



carbide shank

Catalog Number	Shank Dia.	L	F	Min. Bore	Insert Screw	Insert
C06-SDUCR/L-2	0.375	4-3/4"	0.375	0.572	5513-020-03	DCMT-21.51
C08-SDUCR/L-2	0.5	5"	0.437	0.697	5513-020-03	DCMT-21.51
C10-SDUCR/L-2	0.625	7"	0.5	0.822	5513-020-03	DCMT-21.51
C12-SDUCR/L-3	0.75	7"	0.625	1.01	5513-020-09	DCMT-32.52

↑
 ↑
 "R" for right hand bar
 "L" for left hand bar
 "C" for solid shank
 "E" for coolant thru

Heavy metal shanks available, please call for quote
 1-800-274-4686



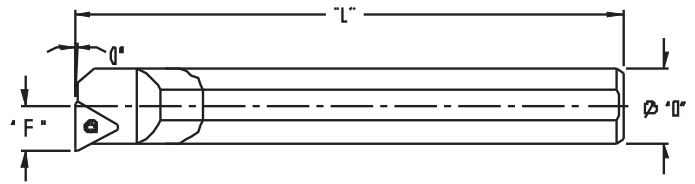
Made in USA





Carbide Boring Bars

STFC
 *Boring & Facing
 *Uses TCMT insert

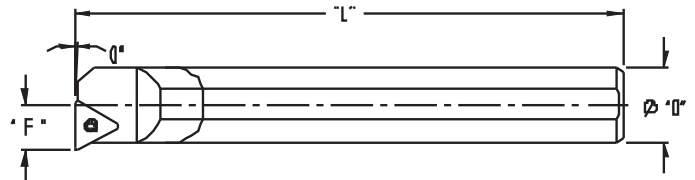


carbide shank

Catalog Number	Shank Dia.	L	F	Min. Bore	Insert Screw	Insert
C06-STFCR/L-2	0.375	4-3/4"	0.25	0.447	5513-020-03	TCMT-21.51
C08-STFCR/L-2	0.5	5"	0.312	0.572	5513-020-03	TCMT-21.51
C10-STFCR/L-2	0.625	7"	0.406	0.728	5513-020-03	TCMT-21.51
C12-STFCR/L-2	0.75	7"	0.5	0.885	5513-020-03	TCMT-21.51
C12-STFCR/L-3	0.75	7"	0.5	0.885	5513-020-09	TCMT-32.52

↑ "R" for right hand bar
 ↑ "L" for left hand bar
 "C" for solid shank
 "E" for coolant thru

STFP
 *Boring & Facing
 *Uses TPMT insert



carbide shank

Catalog Number	Shank Dia.	L	F	Min. Bore	Insert Screw	Insert
C06-STFPR/L-2	0.375	4-3/4"	0.25	0.447	MS-1153	TPMT-21.51
C08-STFPR/L-2	0.5	5"	0.312	0.572	MS-1153	TPMT-21.51
C10-STFPR/L-2	0.625	7"	0.406	0.728	MS-1153	TPMT-21.51
C12-STFPR/L-3	0.75	7"	0.5	0.885	MS-1155	TPMT-32.52

↑ "R" for right hand bar
 ↑ "L" for left hand bar
 "C" for solid shank
 "E" for coolant thru

Heavy metal shanks available, please call for quote
 1-800-274-4686

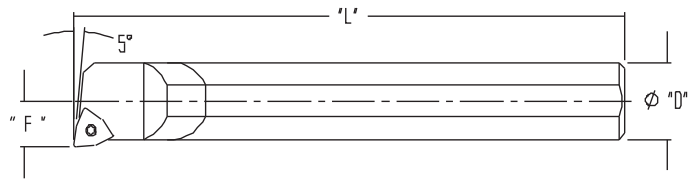


Made in USA





Carbide Boring Bars

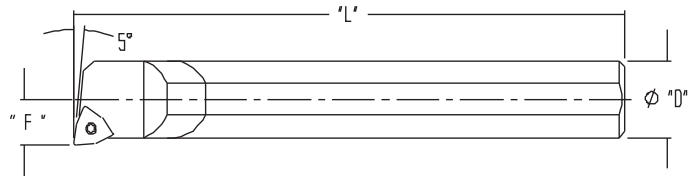


SWLP
 *Boring & Facing
 *Uses WPMT insert

carbide shank

Catalog Number	Shank Dia.	L	F	Min. Bore	Insert Screw	Insert
C03-SWLPR/L-1.5*	0.187	4-1/2"	0.126	0.229	MS-1438	WPMT-1.51.21
C04-SWLPR/L-1.5	0.25	4-1/2"	0.156	0.291	MS-1438	WPMT-1.51.21
C05-SWLPR/L-1.5	0.312	4-1/2"	0.219	0.385	MS-1438	WPMT-1.51.21
C06-SWLPR/L-2	0.375	4-3/4"	0.25	0.447	MS-1153	WPMT-21.51
C08-SWLPR-2	0.5	5"	0.312	0.572	MS-1153	WPMT-21.51
C10-SWLPR-3	0.625	7"	0.406	0.728	MS-1155	WPMT-32.52
C12-SWLPR-3	0.75	7"	0.5	0.885	MS-1155	WPMT-32.52

↑ "R" for right hand bar
 ↑ "L" for left hand bar
 ↑ "C" for solid shank
 ↑ "E" for coolant thru



SWLO
 *Boring & Facing
 *Uses WCMT insert

carbide shank

Catalog Number	Shank Dia.	L	F	Min. Bore	Insert Screw	Insert
CSWLOR 055*	0.187	4-1/2"	0.114	0.217	TS-21	WCMT 1.21
CSWLOR 065	0.25	4-1/2"	0.156	0.291	TS-2	WCMT 1.21
CSWLOR 066	0.312	4-1/2"	0.188	0.354	TS-2	WCMT 1.51.5
CSWLO504R	0.312	4-1/2"	0.203	0.369	TS-25	WCMT 21.51
CSWLOR 070	0.375	4-3/4"	0.218	0.416	TS-25	WCMT 21.51
CSWLOR 062	0.375	4-3/4"	0.25	0.447	TS-25	WCMT 21.51
CSWLOR 082	0.5	5"	0.312	0.572	TS-25	WCMT 21.51
CSWLOR 102	0.625	7"	0.375	0.697	TS-25	WCMT 21.51
CSWLOR 103	0.625	7"	0.375	0.697	TS-4	WCMT 32.52
CSWLOR 123	0.75	7"	0.5	0.885	TS-4	WCMT 32.52

↑ "C" for solid shank
 For coolant thru add
 "C" to the end of the
 part number i.e.
 CSWLOR 123C

Heavy metal shanks available, please call for quote
 1-800-274-4686

*Coolant thru not available

**Heavy Metal not available under 3/8"



Made in USA

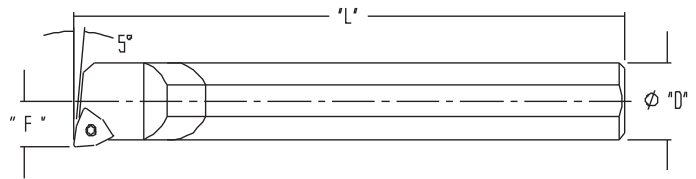




Carbide Boring Bars

SWLC

*Boring & Facing
*Uses WCMT insert



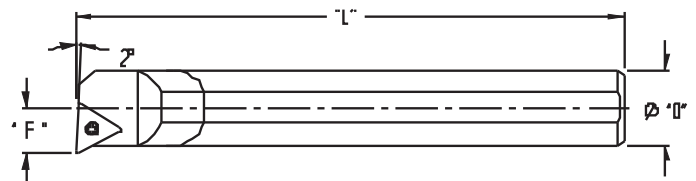
carbide shank

Catalog Number	Shank Dia.	L	F	Min. Bore	Insert Screw	Insert
C03-SWLCR-1.2*	0.187	4-1/2"	0.114	0.217	TS-21	WCMT 1.21
C04-SWLCR-1.2	0.25	4-1/2"	0.156	0.291	TS-2	WCMT 1.21
C05-SWLCR-1.5	0.312	4-1/2"	0.188	0.354	TS-2	WCMT 1.51.5
C05-SWLCR-2	0.312	4-1/2"	0.203	0.369	TS-25	WCMT 21.51
C06-SWLCR-2-218	0.375	4-3/4"	0.218	0.416	TS-25	WCMT 21.51
C06-SWLCR-2	0.375	4-3/4"	0.25	0.447	TS-25	WCMT 21.51
C08-SWLCR-2	0.5	5"	0.312	0.572	TS-25	WCMT 21.51
C10-SWLCR-2	0.625	7"	0.375	0.697	TS-25	WCMT 21.51
C10-SWLCR-3	0.625	7"	0.375	0.697	TS-4	WCMT 32.52
C12-SWLCR-3	0.75	7"	0.5	0.885	TS-4	WCMT 32.52

↑ "R" for right hand bar
↑ "L" for left hand bar
↑ "C" for solid shank
↑ "E" for coolant thru

STJO

*Boring & Facing
*Uses TPGP insert



carbide shank

Catalog Number	Shank Dia.	L	F	Min. Bore	Insert Screw	Insert
CSTJOR/L 062	0.375	4-3/4"	0.25	0.447	BHF0306R	TPGP-221
CSTJOR/L 082	0.5	5"	0.312	0.572	BHF0308R	TPGP-221
CSTJOR/L 102	0.625	7"	0.375	0.697	BHF0308R	TPGP-221
CSTJOR/L 123	0.75	7"	0.5	0.885	BFTX0410A	TPGP-332

↑ "R" for right hand bar
↑ "L" for left hand bar
↑ "C" for solid shank
For coolant thru add "C" to the end of the part number i.e. CSTJOR 123C

Heavy metal shanks available, please call for quote
1-800-274-4686

*Coolant thru not available

**Heavy Metal not available under 3/8"



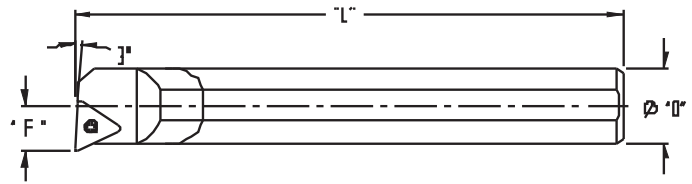
Made in USA





Carbide Boring Bars

STUP
 *Boring & Facing
 *Uses TPMT insert

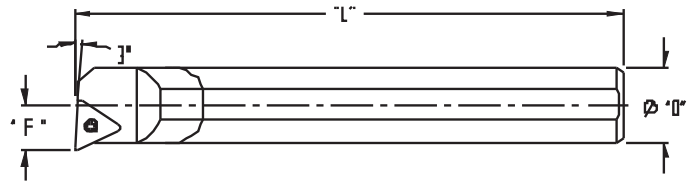


carbide shank

Catalog Number	Shank Dia.	L	F	Min. Bore	Insert Screw	Insert
C06-STUPR/L-2	0.375	4-3/4"	0.25	0.447	MS-1153	TPMT-21.51
C08-STUPR/L-2	0.5	5"	0.312	0.572	MS-1153	TPMT-21.51
C10-STUPR/L-2	0.625	7"	0.406	0.728	MS-1153	TPMT-21.51
C12-STUPR/L-3	0.75	7"	0.5	0.885	MS-1155	TPMT-32.51
C16-STUPR-3	1	7"	0.625	1.135	MS-1155	TPMT-32.52

↑ "R" for right hand bar
 ↑ "L" for left hand bar
 ↑ "C" for solid shank
 ↑ "E" for coolant thru

STUC
 *Boring & Facing
 *Uses TCMT insert



carbide shank

Catalog Number	Shank Dia.	L	F	Min. Bore	Insert Screw	Insert
C06-STUCR/L-2	0.375	4-3/4"	0.25	0.447	5513-020-03	TCMT-21.51
C08-STUCR/L-2	0.5	5"	0.312	0.572	5513-020-03	TCMT-21.51
C10-STUCR/L-2	0.625	7"	0.406	0.728	5513-020-03	TCMT-21.51
C10-STUCR/L-3	0.625	7"	0.406	0.728	5513-020-09	TCMT-32.51
C12-STUCR/L-2	0.75	7"	0.5	0.885	5513-020-03	TCMT-21.51
C12-STUCR/L-3	0.75	7"	0.5	0.885	5513-020-09	TCMT-32.52
C16-STUCR-3	1	7"	0.625	1.135	5513-020-09	TCMT 32.52

↑ "R" for right hand bar
 ↑ "L" for left hand bar
 ↑ "C" for solid shank
 ↑ "E" for coolant thru

Heavy metal shanks available, please call for quote
 1-800-274-4686



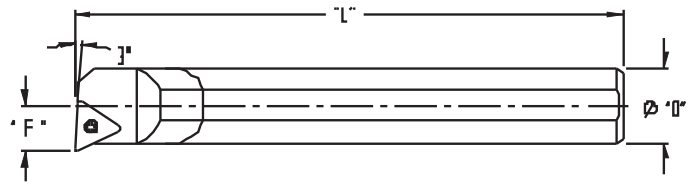
Made in USA





Carbide Boring Bars

STUN
 *Boring & Facing
 *Uses T insert

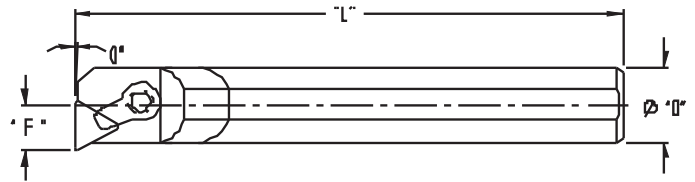


carbide shank

Catalog Number	Shank Dia.	L	F	Min. Bore	Insert Screw	Insert
C06-STUNR/L-2	0.375	4-3/4"	0.25	0.447	S-930	T-221P
C08-STUNR/L-2	0.5	5"	0.312	0.572	S-930	T-221P
C10-STUNR/L-2	0.625	7"	0.406	0.728	S-930	T-221P
C12-STUNR/L-3	0.75	7"	0.5	0.885	S-944	T-321P
C16-STUNR/L-3	1	7"	0.625	1.135	S-944	T-321P

↑ "R" for right hand bar
 ↑ "L" for left hand bar
 ↑ "C" for solid shank
 ↑ "E" for coolant thru

CTFP
 *Boring & Facing
 *Uses TPG insert



carbide shank

Catalog Number	Shank Dia.	L	F	Min. Bore	Clamp/Screw	Insert
C08-CTFPR/L-2	0.5	5"	0.312	0.572	CK-27 / STC-27	TPG-221
C10-CTFPR/L-2	0.625	7"	0.406	0.728	CK-19 / STC-9	TPG-221
C12-CTFPR/L-3	0.75	7"	0.5	0.885	CK-7 / STC-9	TPG-322
C16-CTFPR/L-3	1	7"	0.625	1.135	CK-20 / STC-11	TPG-322

↑ "R" for right hand bar
 ↑ "L" for left hand bar
 ↑ "C" for solid shank
 ↑ "E" for coolant thru

Uses Separate Chip Breakers

Heavy metal shanks available, please call for quote
 1-800-274-4686



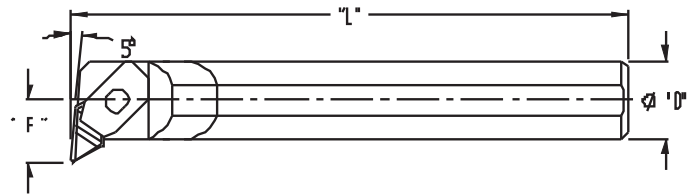
Made in USA





Carbide Boring Bars

NELR/NELL
 *PROFILE
 *Uses NPGR insert



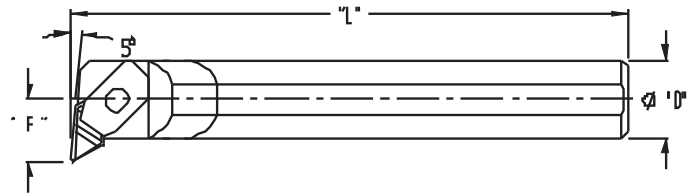
carbide shank

Catalog Number	Shank Dia.	L	F	Min. Bore	Clamp/Screw	Insert
C08-NELL05	0.5	5"	0.375	0.67	CM-105 / S-518	NPGR-51R
C08-NELR05	0.5	5"	0.375	0.67	CM-106 / S-518	NPGR-51L
C10-NELL05	0.625	7"	0.5	0.87	CM-71 / S-524	NPGR-51R
C10-NELR05	0.625	7"	0.5	0.87	CM-79 / S-524	NPGR-51L
C12-NELL05	0.75	7"	0.562	1	CM-68 / S-524	NPGR-51R
C12-NELR05	0.75	7"	0.562	1	CM-68 / S-524	NPGR-51L

↑ "R" for right hand bar
 ↑ "L" for left hand bar
 ↑ "C" for solid shank
 ↑ "E" for coolant thru

*Left Hand Bars use SM-285 Shim/S-959 Screw
 *Right Hand Bars use SM-286 Shim/S-959 Screw

NKLC
 *PROFIL
 *Uses NPGR insert



carbide shank

Catalog Number	Shank Dia.	L	F	Min. Bore	Clamp/Screw	Insert
C08-NKLCL05	0.5	5"	0.375	0.67	CM-105 / S-518	NPGR-51R
C08-NKLCR05	0.5	5"	0.375	0.67	CM-106 / S-518	NPGR-51L
C10-NKLCL05	0.625	7"	0.5	0.87	CM-71 / S-524	NPGR-51R
C10-NKLCR05	625	7"	0.5	0.87	CM-79 / S-524	NPGR-51L
C12-NKLCL05	0.75	7"	0.562	1	CM-68 / S-524	NPGR-51R
C12-NKLCR05	0.75	7"	0.562	1	CM-68 / S-524	NPGR-51L

↑ "R" for right hand bar
 ↑ "L" for left hand bar
 ↑ "C" for solid shank
 ↑ "E" for coolant thru

*Left Hand Bars use SM-285 Shim/S-959 Screw
 *Right Hand Bars use SM-286 Shim/S-959 Screw

Heavy metal shanks available, please call for quote
 1-800-274-4686

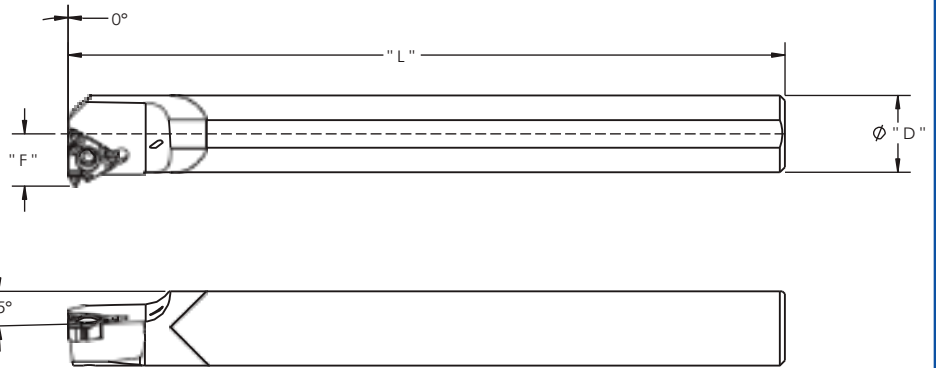


Made in USA





Carbide Thread Bars



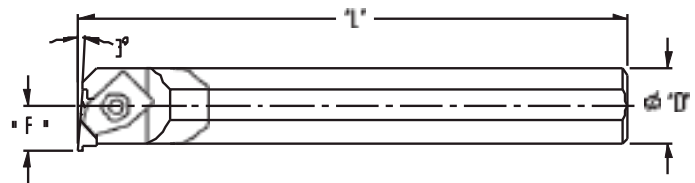
LSER
Laydown Thread
*Uses LT16 insert

carbide shank

Catalog Number	Shank Dia.	L	F	Min. Bore	Insert Screw	Insert
C08-LSER-3	0.5	5"	0.39	0.65	MS-1155	LT16
C10-LSER-3	0.625	7"	0.439	0.761	MS-1155	LT16
C12-LSER-3	0.75	7"	0.51	0.895	MS-1155	LT16

↑
"C" for solid shank
"E" for coolant thru

NER/NEL
*Thread & Groove
*Uses NG insert



carbide shank

Catalog Number	Shank Dia.	L	F	Min. Bore	Clamp/Screw	Insert
C08-NEL2	0.5	5"	0.437	0.697	CM146/SC-110	NG-2R
C08-NER2	0.5	5"	0.437	0.697	CM147/SC-110	NG-2L
C10-NEL2	0.625	7"	0.5	0.822	CM-74/S-310	NG-2R
C10-NER2	0.625	7"	0.5	0.822	CM-75/S-310	NG-2L
C12-NEL2	0.75	7"	0.562	0.947	CM-74/S-310	NG-2R
C12-NER2	0.75	7"	0.562	0.947	CM-75/S-310	NG-2L

↑ ↑
"R" for right hand bar
"L" for left hand bar
"C" for solid shank
"E" for coolant thru

Heavy metal shanks available, please call for quote
1-800-274-4686





*Cindy Blue and Barb Dorumsgaard
Operators and Owners*

*Family Owned and Operated since 1976, NTM Inc.
has been proudly supplying quality products and services
made in the USA for over 40 years.*

Vision Statement

HELPING MANUFACTURERS SUCCEED

Mission Statement

**NTM PROVIDES THE FINEST CUTTING TOOLS, SERVICES
AND MACHINED PRODUCTS FOR OUR CUSTOMERS**

Core Values

- DEDICATION
- INNOVATION
- LOYALTY
- POSITIVITY
- INTEGRITY



Made in USA





Proud Members of the Following Association



NTM Proudly Certified with the following organizations:

